



扫描二维码
关注谱尼测试

测试报告(Test Report) 报告编号(NO.): MRCKXA8G4442187D3 签发日期(Issued Date): 2023-10-12 Page 1 of 23

委托单位 Applicant: ASSKEA GmbH

委托单位提供样品信息如下:

The following sample(s) was/were submitted and identified on behalf of the client as:

样品名称 Sample Name: 可充电锂离子电池 Rechargeable Li-Ion Battery

样品型号 Sample Model: HD11.1-5 (11.1V5Ah) 3S1P NMC21700

零部件描述 Part Description: 见清单 See the List

样品接收日期 Sample Received Date: 2023-10-08

样品测试日期 Testing Period: 2023-10-08 ~ 2023-10-12

参考要求:

Reference Requested:

RoHS 2011/65/EU 及修订指令(EU)2015/863 附录 II 的要求

RoHS Directive 2011/65/EU & (EU)2015/863 Annex II

参考方法:

Reference Method:

1. 拆分申请者提供的成品, 并评估样品和相关测试报告

Review was performed for the samples disjonted from the submitted articles and the ralated test reports submitted by the Applicant

2. 仅对本报告照片中的样品进行下列测试分析

Tests was performed for the samples indicated by the photos in the report.

(1) IEC 62321-3-1:2013,用 X 射线荧光分析仪器进行筛选

IEC 62321-3-1:2013, Screening by XRF Spectroscopy

(2) IEC 62321-3-3:2021 的方法, 用热裂解气相色谱质谱仪对

邻苯二甲酸酯类进行筛选

IEC 62321-3-3:2021 method, Screening Phthalates by PY-GC-MS

(3) 化学测试方法 Wet Chemical Test Method

a. IEC 62321-5 Edition 1.0:2013,用原子吸收光谱仪测定铅的含量

IEC 62321-5 Edition 1.0:2013,Lead Analysis is performed by AAS

b. IEC 62321-5 Edition 1.0:2013,用原子吸收光谱仪测定镉的含量

IEC 62321-5 Edition 1.0:2013,Cadmium Analysis is performed by AAS

c. IEC 62321-7-2 Edition 1.0:2017,

用紫外-可见分光光度计测定六价格的含量

IEC 62321-7-2 Edition 1.0:2017,

Hexavalent Chromium Analysis is performed by UV-Vis

d. IEC 62321-6 Edition 1.0:2015,用气相色谱-质谱仪测定多溴联苯和

多溴二苯醚的含量

IEC 62321-6 Edition 1.0:2015, PBBs and PBDEs Analysis is

performed by GC-MS

测试结果 Test Result:

请参见下页 Please refer to next page(s)

批准人 Approved by:

毛祖青



微信扫一扫, 使用小程序



小程序扫一扫, 在线验证

Code: icuep26a



测试报告(Test Report) 报告编号(NO.): MRCKXA8G4442187D3 签发日期(Issued Date): 2023-10-12 Page 2 of 23

清单 List:

样品编号 Sample No.	零部件描述 Part Description		
G4442187D3-1	有字标签	Word tag	
G4442187D3-2	蓝色胶皮	Blue rubber	
G4442187D3-3	黑色泡棉垫	Black foam cotton pad	
G4442187D3-4	绿色纸片	Green paper	
G4442187D3-5	茶色胶带	Brown tape	
G4442187D3-6	金属连接片	Metal joint	
G4442187D3-7	连接线组件 Connecting wire assembly	红色热缩管	Red heat shrink tube
G4442187D3-8		红色线皮	Red leather
G4442187D3-9		暗红色热缩管	Dark red heat shrink tube
G4442187D3-10		银色线芯	Silver core
G4442187D3-11		保险管-金属端盖	Safety tube - Metal end cap
G4442187D3-12		保险管-玻璃体	Safety tube - vitreous body
G4442187D3-13		保险管-金属芯	Safety tube - Metal core
G4442187D3-14	线束组件 Harness assembly	白色塑料护套	White plastic sheath
G4442187D3-15		金属端子	Metal terminal
G4442187D3-16		黑色线皮	Black leather
G4442187D3-17		蓝色线皮	Blue leather
G4442187D3-18	PCB 电路板 PCB circuit board	感应器	inductor
G4442187D3-19		金属线	Wire
G4442187D3-20		PCB 上的焊锡	Solder on PCB
G4442187D3-21		电阻	resistance
G4442187D3-22		电容	capacitance
G4442187D3-23		IC	IC
G4442187D3-24		三极管	triode
G4442187D3-25		PCB 本体	PCB body





扫描二维码
关注谱尼测试

测试报告(Test Report) 报告编号(NO.): MRCKXA8G4442187D3 签发日期(Issued Date): 2023-10-12 Page 3 of 23

清单 List:

样品编号 Sample No.	零部件描述 Part Description	
G4442187D3-26	金属壳	Metal case
G4442187D3-27	白色垫片	White gasket
G4442187D3-28	金属盖	Metal cover
G4442187D3-29	金属片	Sheet metal
G4442187D3-30	白色密封圈	White seal ring
G4442187D3-31	米白色垫圈	Beige washer
G4442187D3-32	蓝色胶片	Blue film
G4442187D3-33	灰色胶带	Grey tape
G4442187D3-34	绝缘带	Insulating tape
G4442187D3-35	正极片	Positive plate
G4442187D3-36	铝箔	Aluminum foil
G4442187D3-37	铝箔上的粉末	Powder on aluminum foil
G4442187D3-38	负极片	Negative plate
G4442187D3-39	铜箔	Copper foil
G4442187D3-40	铜箔上的粉末	Powder on copper foil



Hotline 400-819-5688
www.ponytest.com
PONY-BGLS186-03C-003-2021A

谱尼测试集团深圳有限公司

公司地址: 深圳市宝安区福海街道桥头社区永和路鑫豪盛工业园 1 栋、2 栋 3 层
检测地址: 深圳市宝安区福海街道桥头社区永和路鑫豪盛工业园 1 栋、2 栋 3 层

电话: 0755-26050909
传真: 0755-26068336



扫描二维码
关注谱尼测试

测试报告(Test Report) 报告编号(NO.): MRCKXA8G4442187D3 签发日期(Issued Date): 2023-10-12 Page 4 of 23

测试结果 Test Result (Unit: mg/kg)

样品编号 Sample No.	EDXRF		PHTH 筛分结果 ^②	化学测试 Chemical Testing			单项判定 Item Conclusion
	测试项目 Test Item	结果 ^① Results ^①	PHTH Screening Results ^②	测试项目 Test Item	结果 ^③ Result ^③	限量 Limit	
G4442187D3-1	Pb	BL	\	Pb	\	1000	PASS
	Cd	BL	\	Cd	\	100	PASS
	Hg	BL	\	Hg	\	1000	PASS
	Cr	BL	\	Cr ⁶⁺	\	1000	PASS
	Br	BL	\	PBBs	\	1000	PASS
				PBDEs	\	1000	PASS
	DEHP	\	BL	DEHP	\	1000	PASS
	DBP	\	BL	DBP	\	1000	PASS
	BBP	\	BL	BBP	\	1000	PASS
DIBP	\	BL	DIBP	\	1000	PASS	
G4442187D3-2	Pb	BL	\	Pb	\	1000	PASS
	Cd	BL	\	Cd	\	100	PASS
	Hg	BL	\	Hg	\	1000	PASS
	Cr	BL	\	Cr ⁶⁺	\	1000	PASS
	Br	BL	\	PBBs	\	1000	PASS
				PBDEs	\	1000	PASS
	DEHP	\	BL	DEHP	\	1000	PASS
	DBP	\	BL	DBP	\	1000	PASS
	BBP	\	BL	BBP	\	1000	PASS
DIBP	\	BL	DIBP	\	1000	PASS	
G4442187D3-3	Pb	BL	\	Pb	\	1000	PASS
	Cd	BL	\	Cd	\	100	PASS
	Hg	BL	\	Hg	\	1000	PASS
	Cr	BL	\	Cr ⁶⁺	\	1000	PASS
	Br	BL	\	PBBs	\	1000	PASS
				PBDEs	\	1000	PASS
	DEHP	\	BL	DEHP	\	1000	PASS
	DBP	\	BL	DBP	\	1000	PASS
	BBP	\	BL	BBP	\	1000	PASS
DIBP	\	BL	DIBP	\	1000	PASS	



Hotline 400-819-5688

www.ponytest.com

PONY-BGLS186-03C-003-2021A

谱尼测试集团深圳有限公司

公司地址: 深圳市宝安区福海街道桥头社区永和路鑫豪盛工业园 1 栋、2 栋 3 层

检测地址: 深圳市宝安区福海街道桥头社区永和路鑫豪盛工业园 1 栋、2 栋 3 层

电话: 0755-26050909

传真: 0755-26068336



扫描二维码
关注谱尼测试

测试报告(Test Report) 报告编号(NO.): MRCKXA8G4442187D3 签发日期(Issued Date): 2023-10-12 Page 5 of 23

测试结果 Test Result (Unit: mg/kg)

样品编号 Sample No.	EDXRF		PHTH 筛分结果 ^②	化学测试 Chemical Testing			单项判定 Item Conclusion
	测试项目 Test Item	结果 ^① Results ^①	PHTH Screening Results ^②	测试项目 Test Item	结果 ^③ Result ^③	限量 Limit	
G4442187D3-4	Pb	BL	\	Pb	\	1000	PASS
	Cd	BL	\	Cd	\	100	PASS
	Hg	BL	\	Hg	\	1000	PASS
	Cr	BL	\	Cr ⁶⁺	\	1000	PASS
	Br	BL	\	PBBs	\	1000	PASS
				PBDEs	\	1000	PASS
	DEHP	\	BL	DEHP	\	1000	PASS
	DBP	\	BL	DBP	\	1000	PASS
	BBP	\	BL	BBP	\	1000	PASS
DIBP	\	BL	DIBP	\	1000	PASS	
G4442187D3-5	Pb	BL	\	Pb	\	1000	PASS
	Cd	BL	\	Cd	\	100	PASS
	Hg	BL	\	Hg	\	1000	PASS
	Cr	BL	\	Cr ⁶⁺	\	1000	PASS
	Br	BL	\	PBBs	\	1000	PASS
				PBDEs	\	1000	PASS
	DEHP	\	BL	DEHP	\	1000	PASS
	DBP	\	BL	DBP	\	1000	PASS
	BBP	\	BL	BBP	\	1000	PASS
DIBP	\	BL	DIBP	\	1000	PASS	
G4442187D3-6	Pb	BL	\	Pb	\	1000	PASS
	Cd	BL	\	Cd	\	100	PASS
	Hg	BL	\	Hg	\	1000	PASS
	Cr	BL	\	Cr ⁶⁺	\	1000	PASS
	Br	\	\	PBBs	\	1000	—
				PBDEs	\	1000	—
	DEHP	\	\	DEHP	\	1000	—
	DBP	\	\	DBP	\	1000	—
	BBP	\	\	BBP	\	1000	—
DIBP	\	\	DIBP	\	1000	—	



Hotline 400-819-5688

www.ponytest.com

PONY-BGLS186-03C-003-2021A

谱尼测试集团深圳有限公司

公司地址: 深圳市宝安区福海街道桥头社区永和路鑫豪盛工业园 1 栋、2 栋 3 层

检测地址: 深圳市宝安区福海街道桥头社区永和路鑫豪盛工业园 1 栋、2 栋 3 层

电话: 0755-26050909

传真: 0755-26068336



扫描二维码
关注谱尼测试

测试报告(Test Report) 报告编号(NO.): MRCKXA8G4442187D3 签发日期(Issued Date): 2023-10-12 Page 6 of 23

测试结果 Test Result (Unit: mg/kg)

样品编号 Sample No.	EDXRF		PHTH 筛分结果 ^②	化学测试 Chemical Testing			单项判定 Item Conclusion
	测试项目 Test Item	结果 ^① Results ^①	PHTH Screening Results ^②	测试项目 Test Item	结果 ^③ Result ^③	限量 Limit	
G4442187D3-7	Pb	BL	\	Pb	\	1000	PASS
	Cd	BL	\	Cd	\	100	PASS
	Hg	BL	\	Hg	\	1000	PASS
	Cr	BL	\	Cr ⁶⁺	\	1000	PASS
	Br	BL	\	PBBs	\	1000	PASS
				PBDEs	\	1000	PASS
	DEHP	\	BL	DEHP	\	1000	PASS
	DBP	\	BL	DBP	\	1000	PASS
	BBP	\	BL	BBP	\	1000	PASS
DIBP	\	BL	DIBP	\	1000	PASS	
G4442187D3-8	Pb	BL	\	Pb	\	1000	PASS
	Cd	BL	\	Cd	\	100	PASS
	Hg	BL	\	Hg	\	1000	PASS
	Cr	BL	\	Cr ⁶⁺	\	1000	PASS
	Br	BL	\	PBBs	\	1000	PASS
				PBDEs	\	1000	PASS
	DEHP	\	BL	DEHP	\	1000	PASS
	DBP	\	BL	DBP	\	1000	PASS
	BBP	\	BL	BBP	\	1000	PASS
DIBP	\	BL	DIBP	\	1000	PASS	
G4442187D3-9	Pb	BL	\	Pb	\	1000	PASS
	Cd	BL	\	Cd	\	100	PASS
	Hg	BL	\	Hg	\	1000	PASS
	Cr	BL	\	Cr ⁶⁺	\	1000	PASS
	Br	BL	\	PBBs	\	1000	PASS
				PBDEs	\	1000	PASS
	DEHP	\	BL	DEHP	\	1000	PASS
	DBP	\	BL	DBP	\	1000	PASS
	BBP	\	BL	BBP	\	1000	PASS
DIBP	\	BL	DIBP	\	1000	PASS	



Hotline 400-819-5688

www.ponytest.com

PONY-BGLS186-03C-003-2021A

谱尼测试集团深圳有限公司

公司地址: 深圳市宝安区福海街道桥头社区永和路鑫豪盛工业园 1 栋、2 栋 3 层

检测地址: 深圳市宝安区福海街道桥头社区永和路鑫豪盛工业园 1 栋、2 栋 3 层

电话: 0755-26050909

传真: 0755-26068336



扫描二维码
关注谱尼测试

测试报告(Test Report) 报告编号(NO.): MRCKXA8G4442187D3 签发日期(Issued Date): 2023-10-12 Page 7 of 23

测试结果 Test Result (Unit: mg/kg)

样品编号 Sample No.	EDXRF		PHTH 筛分结果 ^②	化学测试 Chemical Testing			单项判定 Item Conclusion
	测试项目 Test Item	结果 ^① Results ^①	PHTH Screening Results ^②	测试项目 Test Item	结果 ^③ Result ^③	限量 Limit	
G4442187D3-10	Pb	BL	\	Pb	\	1000	PASS
	Cd	BL	\	Cd	\	100	PASS
	Hg	BL	\	Hg	\	1000	PASS
	Cr	BL	\	Cr ⁶⁺	\	1000	PASS
	Br	\	\	PBBs	\	1000	—
				PBDEs	\	1000	—
	DEHP	\	\	DEHP	\	1000	—
	DBP	\	\	DBP	\	1000	—
	BBP	\	\	BBP	\	1000	—
DIBP	\	\	DIBP	\	1000	—	
G4442187D3-11	Pb	X	\	Pb	*3.30×10 ⁴	1000	PASS
	Cd	BL	\	Cd	\	100	PASS
	Hg	BL	\	Hg	\	1000	PASS
	Cr	BL	\	Cr ⁶⁺	\	1000	PASS
	Br	\	\	PBBs	\	1000	—
				PBDEs	\	1000	—
	DEHP	\	\	DEHP	\	1000	—
	DBP	\	\	DBP	\	1000	—
	BBP	\	\	BBP	\	1000	—
DIBP	\	\	DIBP	\	1000	—	
G4442187D3-12	Pb	BL	\	Pb	\	1000	PASS
	Cd	BL	\	Cd	\	100	PASS
	Hg	BL	\	Hg	\	1000	PASS
	Cr	BL	\	Cr ⁶⁺	\	1000	PASS
	Br	BL	\	PBBs	\	1000	PASS
				PBDEs	\	1000	PASS
	DEHP	\	BL	DEHP	\	1000	PASS
	DBP	\	BL	DBP	\	1000	PASS
	BBP	\	BL	BBP	\	1000	PASS
DIBP	\	BL	DIBP	\	1000	PASS	



Hotline 400-819-5688

www.ponytest.com

PONY-BGLS186-03C-003-2021A

谱尼测试集团深圳有限公司

公司地址: 深圳市宝安区福海街道桥头社区永和路鑫豪盛工业园 1 栋、2 栋 3 层

检测地址: 深圳市宝安区福海街道桥头社区永和路鑫豪盛工业园 1 栋、2 栋 3 层

电话: 0755-26050909

传真: 0755-26068336

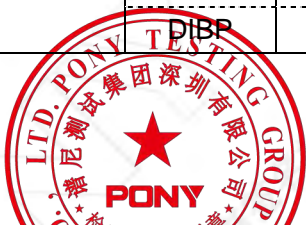


扫描二维码
关注谱尼测试

测试报告(Test Report) 报告编号(NO.): MRCKXA8G4442187D3 签发日期(Issued Date): 2023-10-12 Page 8 of 23

测试结果 Test Result (Unit: mg/kg)

样品编号 Sample No.	EDXRF		PHTH 筛分结果 ^②	化学测试 Chemical Testing			单项判定 Item Conclusion
	测试项目 Test Item	结果 ^① Results ^①	PHTH Screening Results ^②	测试项目 Test Item	结果 ^③ Result ^③	限量 Limit	
G4442187D3-13	Pb	BL	\	Pb	\	1000	PASS
	Cd	BL	\	Cd	\	100	PASS
	Hg	BL	\	Hg	\	1000	PASS
	Cr	BL	\	Cr ⁶⁺	\	1000	PASS
	Br	\	\	PBBs	\	1000	—
				PBDEs	\	1000	—
	DEHP	\	\	DEHP	\	1000	—
	DBP	\	\	DBP	\	1000	—
	BBP	\	\	BBP	\	1000	—
DIBP	\	\	DIBP	\	1000	—	
G4442187D3-14	Pb	BL	\	Pb	\	1000	PASS
	Cd	BL	\	Cd	\	100	PASS
	Hg	BL	\	Hg	\	1000	PASS
	Cr	BL	\	Cr ⁶⁺	\	1000	PASS
	Br	BL	\	PBBs	\	1000	PASS
				PBDEs	\	1000	PASS
	DEHP	\	BL	DEHP	\	1000	PASS
	DBP	\	BL	DBP	\	1000	PASS
	BBP	\	BL	BBP	\	1000	PASS
DIBP	\	BL	DIBP	\	1000	PASS	
G4442187D3-15	Pb	BL	\	Pb	\	1000	PASS
	Cd	BL	\	Cd	\	100	PASS
	Hg	BL	\	Hg	\	1000	PASS
	Cr	BL	\	Cr ⁶⁺	\	1000	PASS
	Br	\	\	PBBs	\	1000	—
				PBDEs	\	1000	—
	DEHP	\	\	DEHP	\	1000	—
	DBP	\	\	DBP	\	1000	—
	BBP	\	\	BBP	\	1000	—
DIBP	\	\	DIBP	\	1000	—	



Hotline 400-819-5688

www.ponytest.com

PONY-BGLS186-03C-003-2021A

谱尼测试集团深圳有限公司

公司地址: 深圳市宝安区福海街道桥头社区永和路鑫豪盛工业园 1 栋、2 栋 3 层

检测地址: 深圳市宝安区福海街道桥头社区永和路鑫豪盛工业园 1 栋、2 栋 3 层

电话: 0755-26050909

传真: 0755-26068336



测试报告(Test Report) 报告编号(NO.): MRCKXA8G4442187D3 签发日期(Issued Date): 2023-10-12 Page 9 of 23

测试结果 Test Result (Unit: mg/kg)

样品编号 Sample No.	EDXRF		PHTH 筛分结果 ^②	化学测试 Chemical Testing			单项判定 Item Conclusion
	测试项目 Test Item	结果 ^① Results ^①	PHTH Screening Results ^②	测试项目 Test Item	结果 ^③ Result ^③	限量 Limit	
G4442187D3-16	Pb	BL	\	Pb	\	1000	PASS
	Cd	BL	\	Cd	\	100	PASS
	Hg	BL	\	Hg	\	1000	PASS
	Cr	BL	\	Cr ⁶⁺	\	1000	PASS
	Br	BL	\	PBBs	\	1000	PASS
				PBDEs	\	1000	PASS
	DEHP	\	BL	DEHP	\	1000	PASS
	DBP	\	BL	DBP	\	1000	PASS
	BBP	\	BL	BBP	\	1000	PASS
DIBP	\	BL	DIBP	\	1000	PASS	
G4442187D3-17	Pb	BL	\	Pb	\	1000	PASS
	Cd	BL	\	Cd	\	100	PASS
	Hg	BL	\	Hg	\	1000	PASS
	Cr	BL	\	Cr ⁶⁺	\	1000	PASS
	Br	BL	\	PBBs	\	1000	PASS
				PBDEs	\	1000	PASS
	DEHP	\	BL	DEHP	\	1000	PASS
	DBP	\	BL	DBP	\	1000	PASS
	BBP	\	BL	BBP	\	1000	PASS
DIBP	\	BL	DIBP	\	1000	PASS	
G4442187D3-18	Pb	BL	\	Pb	\	1000	PASS
	Cd	BL	\	Cd	\	100	PASS
	Hg	BL	\	Hg	\	1000	PASS
	Cr	BL	\	Cr ⁶⁺	\	1000	PASS
	Br	BL	\	PBBs	\	1000	PASS
				PBDEs	\	1000	PASS
	DEHP	\	BL	DEHP	\	1000	PASS
	DBP	\	BL	DBP	\	1000	PASS
	BBP	\	BL	BBP	\	1000	PASS
DIBP	\	BL	DIBP	\	1000	PASS	



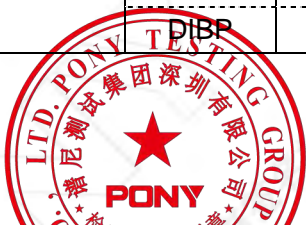


扫描二维码
关注谱尼测试

测试报告(Test Report) 报告编号(NO.): MRCKXA8G4442187D3 签发日期(Issued Date): 2023-10-12 Page 10 of 23

测试结果 Test Result (Unit: mg/kg)

样品编号 Sample No.	EDXRF		PHTH 筛分结果 ^②	化学测试 Chemical Testing			单项判定 Item Conclusion
	测试项目 Test Item	结果 ^① Results ^①	PHTH Screening Results ^②	测试项目 Test Item	结果 ^③ Result ^③	限量 Limit	
G4442187D3-19	Pb	BL	\	Pb	\	1000	PASS
	Cd	BL	\	Cd	\	100	PASS
	Hg	BL	\	Hg	\	1000	PASS
	Cr	BL	\	Cr ⁶⁺	\	1000	PASS
	Br	\	\	PBBs	\	1000	—
				PBDEs	\	1000	—
	DEHP	\	\	DEHP	\	1000	—
	DBP	\	\	DBP	\	1000	—
	BBP	\	\	BBP	\	1000	—
DIBP	\	\	DIBP	\	1000	—	
G4442187D3-20	Pb	X	\	Pb	#2.52×10 ⁴	1000	PASS
	Cd	BL	\	Cd	\	100	PASS
	Hg	BL	\	Hg	\	1000	PASS
	Cr	BL	\	Cr ⁶⁺	\	1000	PASS
	Br	\	\	PBBs	\	1000	—
				PBDEs	\	1000	—
	DEHP	\	\	DEHP	\	1000	—
	DBP	\	\	DBP	\	1000	—
	BBP	\	\	BBP	\	1000	—
DIBP	\	\	DIBP	\	1000	—	
G4442187D3-21	Pb	BL	\	Pb	\	1000	PASS
	Cd	X	\	Cd	N.D.	100	PASS
	Hg	BL	\	Hg	\	1000	PASS
	Cr	X	\	Cr ⁶⁺	N.D.	1000	PASS
	Br	BL	\	PBBs	\	1000	PASS
				PBDEs	\	1000	PASS
	DEHP	\	BL	DEHP	\	1000	PASS
	DBP	\	BL	DBP	\	1000	PASS
	BBP	\	BL	BBP	\	1000	PASS
DIBP	\	BL	DIBP	\	1000	PASS	



Hotline 400-819-5688

www.ponytest.com

PONY-BGLS186-03C-003-2021A

谱尼测试集团深圳有限公司

公司地址: 深圳市宝安区福海街道桥头社区永和路鑫豪盛工业园 1 栋、2 栋 3 层

检测地址: 深圳市宝安区福海街道桥头社区永和路鑫豪盛工业园 1 栋、2 栋 3 层

电话: 0755-26050909

传真: 0755-26068336



扫描二维码
关注谱尼测试

测试报告(Test Report) 报告编号(NO.): MRCKXA8G4442187D3 签发日期(Issued Date): 2023-10-12 Page 11 of 23

测试结果 Test Result (Unit: mg/kg)

样品编号 Sample No.	EDXRF		PHTH 筛分结果 ^②	化学测试 Chemical Testing			单项判定 Item Conclusion
	测试项目 Test Item	结果 ^① Results ^①	PHTH Screening Results ^②	测试项目 Test Item	结果 ^③ Result ^③	限量 Limit	
G4442187D3-22	Pb	BL	\	Pb	\	1000	PASS
	Cd	X	\	Cd	N.D.	100	PASS
	Hg	BL	\	Hg	\	1000	PASS
	Cr	BL	\	Cr ⁶⁺	\	1000	PASS
	Br	BL	\	PBBs	\	1000	PASS
				PBDEs	\	1000	PASS
	DEHP	\	BL	DEHP	\	1000	PASS
	DBP	\	BL	DBP	\	1000	PASS
	BBP	\	BL	BBP	\	1000	PASS
DIBP	\	BL	DIBP	\	1000	PASS	
G4442187D3-23	Pb	BL	\	Pb	\	1000	PASS
	Cd	BL	\	Cd	\	100	PASS
	Hg	BL	\	Hg	\	1000	PASS
	Cr	BL	\	Cr ⁶⁺	\	1000	PASS
	Br	BL	\	PBBs	\	1000	PASS
				PBDEs	\	1000	PASS
	DEHP	\	BL	DEHP	\	1000	PASS
	DBP	\	BL	DBP	\	1000	PASS
	BBP	\	BL	BBP	\	1000	PASS
DIBP	\	BL	DIBP	\	1000	PASS	
G4442187D3-24	Pb	BL	\	Pb	\	1000	PASS
	Cd	BL	\	Cd	\	100	PASS
	Hg	BL	\	Hg	\	1000	PASS
	Cr	BL	\	Cr ⁶⁺	\	1000	PASS
	Br	BL	\	PBBs	\	1000	PASS
				PBDEs	\	1000	PASS
	DEHP	\	BL	DEHP	\	1000	PASS
	DBP	\	BL	DBP	\	1000	PASS
	BBP	\	BL	BBP	\	1000	PASS
DIBP	\	BL	DIBP	\	1000	PASS	



Hotline 400-819-5688

www.ponytest.com

PONY-BGLS186-03C-003-2021A

谱尼测试集团深圳有限公司

公司地址: 深圳市宝安区福海街道桥头社区永和路鑫豪盛工业园 1 栋、2 栋 3 层

检测地址: 深圳市宝安区福海街道桥头社区永和路鑫豪盛工业园 1 栋、2 栋 3 层

电话: 0755-26050909

传真: 0755-26068336



扫描二维码
关注谱尼测试

测试报告(Test Report) 报告编号(NO.): MRCKXA8G4442187D3 签发日期(Issued Date): 2023-10-12 Page 12 of 23

测试结果 Test Result (Unit: mg/kg)

样品编号 Sample No.	EDXRF		PHTH 筛分结果 ^②	化学测试 Chemical Testing			单项判定 Item Conclusion
	测试项目 Test Item	结果 ^① Results ^①	PHTH Screening Results ^②	测试项目 Test Item	结果 ^③ Result ^③	限量 Limit	
G4442187D3-25	Pb	BL	\	Pb	\	1000	PASS
	Cd	BL	\	Cd	\	100	PASS
	Hg	BL	\	Hg	\	1000	PASS
	Cr	BL	\	Cr ⁶⁺	\	1000	PASS
	Br	X	\	PBBs	N.D.	1000	PASS
				PBDEs	N.D.	1000	PASS
	DEHP	\	BL	DEHP	\	1000	PASS
	DBP	\	BL	DBP	\	1000	PASS
	BBP	\	BL	BBP	\	1000	PASS
DIBP	\	BL	DIBP	\	1000	PASS	
G4442187D3-26	Pb	BL	\	Pb	\	1000	PASS
	Cd	BL	\	Cd	\	100	PASS
	Hg	BL	\	Hg	\	1000	PASS
	Cr	BL	\	Cr ⁶⁺	\	1000	PASS
	Br	\	\	PBBs	\	1000	—
				PBDEs	\	1000	—
	DEHP	\	\	DEHP	\	1000	—
	DBP	\	\	DBP	\	1000	—
	BBP	\	\	BBP	\	1000	—
DIBP	\	\	DIBP	\	1000	—	
G4442187D3-27	Pb	BL	\	Pb	\	1000	PASS
	Cd	BL	\	Cd	\	100	PASS
	Hg	BL	\	Hg	\	1000	PASS
	Cr	BL	\	Cr ⁶⁺	\	1000	PASS
	Br	BL	\	PBBs	\	1000	PASS
				PBDEs	\	1000	PASS
	DEHP	\	BL	DEHP	\	1000	PASS
	DBP	\	BL	DBP	\	1000	PASS
	BBP	\	BL	BBP	\	1000	PASS
DIBP	\	BL	DIBP	\	1000	PASS	



Hotline 400-819-5688

www.ponytest.com

PONY-BGLS186-03C-003-2021A

谱尼测试集团深圳有限公司

公司地址: 深圳市宝安区福海街道桥头社区永和路鑫豪盛工业园 1 栋、2 栋 3 层

检测地址: 深圳市宝安区福海街道桥头社区永和路鑫豪盛工业园 1 栋、2 栋 3 层

电话: 0755-26050909

传真: 0755-26068336



测试报告(Test Report) 报告编号(NO.): MRCKXA8G4442187D3 签发日期(Issued Date): 2023-10-12 Page 13 of 23

测试结果 Test Result (Unit: mg/kg)

样品编号 Sample No.	EDXRF		PHTH 筛分结果 ^②	化学测试 Chemical Testing			单项判定 Item Conclusion
	测试项目 Test Item	结果 ^① Results ^①	PHTH Screening Results ^②	测试项目 Test Item	结果 ^③ Result ^③	限量 Limit	
G4442187D3-28	Pb	BL	\	Pb	\	1000	PASS
	Cd	BL	\	Cd	\	100	PASS
	Hg	BL	\	Hg	\	1000	PASS
	Cr	BL	\	Cr ⁶⁺	\	1000	PASS
	Br	\	\	PBBs	\	1000	—
				PBDEs	\	1000	—
	DEHP	\	\	DEHP	\	1000	—
	DBP	\	\	DBP	\	1000	—
	BBP	\	\	BBP	\	1000	—
DIBP	\	\	DIBP	\	1000	—	
G4442187D3-29	Pb	BL	\	Pb	\	1000	PASS
	Cd	BL	\	Cd	\	100	PASS
	Hg	BL	\	Hg	\	1000	PASS
	Cr	BL	\	Cr ⁶⁺	\	1000	PASS
	Br	\	\	PBBs	\	1000	—
				PBDEs	\	1000	—
	DEHP	\	\	DEHP	\	1000	—
	DBP	\	\	DBP	\	1000	—
	BBP	\	\	BBP	\	1000	—
DIBP	\	\	DIBP	\	1000	—	
G4442187D3-30	Pb	BL	\	Pb	\	1000	PASS
	Cd	BL	\	Cd	\	100	PASS
	Hg	BL	\	Hg	\	1000	PASS
	Cr	BL	\	Cr ⁶⁺	\	1000	PASS
	Br	BL	\	PBBs	\	1000	PASS
				PBDEs	\	1000	PASS
	DEHP	\	BL	DEHP	\	1000	PASS
	DBP	\	BL	DBP	\	1000	PASS
	BBP	\	BL	BBP	\	1000	PASS
DIBP	\	BL	DIBP	\	1000	PASS	





测试报告(Test Report) 报告编号(NO.): MRCKXA8G4442187D3 签发日期(Issued Date): 2023-10-12 Page 14 of 23

测试结果 Test Result (Unit: mg/kg)

样品编号 Sample No.	EDXRF		PHTH 筛分结果 ^②	化学测试 Chemical Testing			单项判定 Item Conclusion
	测试项目 Test Item	结果 ^① Results ^①	PHTH Screening Results ^②	测试项目 Test Item	结果 ^③ Result ^③	限量 Limit	
G4442187D3-31	Pb	BL	\	Pb	\	1000	PASS
	Cd	BL	\	Cd	\	100	PASS
	Hg	BL	\	Hg	\	1000	PASS
	Cr	BL	\	Cr ⁶⁺	\	1000	PASS
	Br	BL	\	PBBs	\	1000	PASS
				PBDEs	\	1000	PASS
	DEHP	\	BL	DEHP	\	1000	PASS
	DBP	\	BL	DBP	\	1000	PASS
	BBP	\	BL	BBP	\	1000	PASS
DIBP	\	BL	DIBP	\	1000	PASS	
G4442187D3-32	Pb	BL	\	Pb	\	1000	PASS
	Cd	BL	\	Cd	\	100	PASS
	Hg	BL	\	Hg	\	1000	PASS
	Cr	BL	\	Cr ⁶⁺	\	1000	PASS
	Br	BL	\	PBBs	\	1000	PASS
				PBDEs	\	1000	PASS
	DEHP	\	BL	DEHP	\	1000	PASS
	DBP	\	BL	DBP	\	1000	PASS
	BBP	\	BL	BBP	\	1000	PASS
DIBP	\	BL	DIBP	\	1000	PASS	
G4442187D3-33	Pb	BL	\	Pb	\	1000	PASS
	Cd	BL	\	Cd	\	100	PASS
	Hg	BL	\	Hg	\	1000	PASS
	Cr	BL	\	Cr ⁶⁺	\	1000	PASS
	Br	BL	\	PBBs	\	1000	PASS
				PBDEs	\	1000	PASS
	DEHP	\	BL	DEHP	\	1000	PASS
	DBP	\	BL	DBP	\	1000	PASS
	BBP	\	BL	BBP	\	1000	PASS
DIBP	\	BL	DIBP	\	1000	PASS	





测试报告(Test Report) 报告编号(NO.): MRCKXA8G4442187D3 签发日期(Issued Date): 2023-10-12 Page 15 of 23

测试结果 Test Result (Unit: mg/kg)

样品编号 Sample No.	EDXRF		PHTH 筛分结果 ^②	化学测试 Chemical Testing			单项判定 Item Conclusion
	测试项目 Test Item	结果 ^① Results ^①	PHTH Screening Results ^②	测试项目 Test Item	结果 ^③ Result ^③	限量 Limit	
G4442187D3-34	Pb	BL	\	Pb	\	1000	PASS
	Cd	BL	\	Cd	\	100	PASS
	Hg	BL	\	Hg	\	1000	PASS
	Cr	BL	\	Cr ⁶⁺	\	1000	PASS
	Br	BL	\	PBBs	\	1000	PASS
				PBDEs	\	1000	PASS
	DEHP	\	BL	DEHP	\	1000	PASS
	DBP	\	BL	DBP	\	1000	PASS
	BBP	\	BL	BBP	\	1000	PASS
DIBP	\	BL	DIBP	\	1000	PASS	
G4442187D3-35	Pb	BL	\	Pb	\	1000	PASS
	Cd	BL	\	Cd	\	100	PASS
	Hg	BL	\	Hg	\	1000	PASS
	Cr	BL	\	Cr ⁶⁺	\	1000	PASS
	Br	\	\	PBBs	\	1000	—
				PBDEs	\	1000	—
	DEHP	\	\	DEHP	\	1000	—
	DBP	\	\	DBP	\	1000	—
	BBP	\	\	BBP	\	1000	—
DIBP	\	\	DIBP	\	1000	—	
G4442187D3-36	Pb	BL	\	Pb	\	1000	PASS
	Cd	BL	\	Cd	\	100	PASS
	Hg	BL	\	Hg	\	1000	PASS
	Cr	BL	\	Cr ⁶⁺	\	1000	PASS
	Br	\	\	PBBs	\	1000	—
				PBDEs	\	1000	—
	DEHP	\	\	DEHP	\	1000	—
	DBP	\	\	DBP	\	1000	—
	BBP	\	\	BBP	\	1000	—
DIBP	\	\	DIBP	\	1000	—	



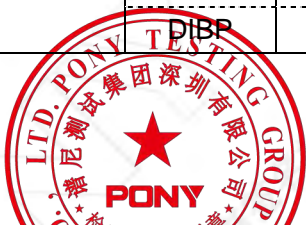


扫二维码
关注谱尼测试

测试报告(Test Report) 报告编号(NO.): MRCKXA8G4442187D3 签发日期(Issued Date): 2023-10-12 Page 16 of 23

测试结果 Test Result (Unit: mg/kg)

样品编号 Sample No.	EDXRF		PHTH 筛分结果 ^②	化学测试 Chemical Testing			单项判定 Item Conclusion
	测试项目 Test Item	结果 ^① Results ^①	PHTH Screening Results ^②	测试项目 Test Item	结果 ^③ Result ^③	限量 Limit	
G4442187D3-37	Pb	BL	\	Pb	\	1000	PASS
	Cd	BL	\	Cd	\	100	PASS
	Hg	BL	\	Hg	\	1000	PASS
	Cr	BL	\	Cr ⁶⁺	\	1000	PASS
	Br	BL	\	PBBs	\	1000	PASS
				PBDEs	\	1000	PASS
	DEHP	\	BL	DEHP	\	1000	PASS
	DBP	\	BL	DBP	\	1000	PASS
	BBP	\	BL	BBP	\	1000	PASS
DIBP	\	BL	DIBP	\	1000	PASS	
G4442187D3-38	Pb	BL	\	Pb	\	1000	PASS
	Cd	BL	\	Cd	\	100	PASS
	Hg	BL	\	Hg	\	1000	PASS
	Cr	BL	\	Cr ⁶⁺	\	1000	PASS
	Br	\	\	PBBs	\	1000	—
				PBDEs	\	1000	—
	DEHP	\	\	DEHP	\	1000	—
	DBP	\	\	DBP	\	1000	—
	BBP	\	\	BBP	\	1000	—
DIBP	\	\	DIBP	\	1000	—	
G4442187D3-39	Pb	BL	\	Pb	\	1000	PASS
	Cd	BL	\	Cd	\	100	PASS
	Hg	BL	\	Hg	\	1000	PASS
	Cr	BL	\	Cr ⁶⁺	\	1000	PASS
	Br	\	\	PBBs	\	1000	—
				PBDEs	\	1000	—
	DEHP	\	\	DEHP	\	1000	—
	DBP	\	\	DBP	\	1000	—
	BBP	\	\	BBP	\	1000	—
DIBP	\	\	DIBP	\	1000	—	



Hotline 400-819-5688

www.ponytest.com

PONY-BGLS186-03C-003-2021A

谱尼测试集团深圳有限公司

公司地址: 深圳市宝安区福海街道桥头社区永和路鑫豪盛工业园 1 栋、2 栋 3 层

检测地址: 深圳市宝安区福海街道桥头社区永和路鑫豪盛工业园 1 栋、2 栋 3 层

电话: 0755-26050909

传真: 0755-26068336



扫微信二维码
关注谱尼测试

测试报告(Test Report) 报告编号(NO.): MRCKXA8G4442187D3 签发日期(Issued Date): 2023-10-12 Page 17 of 23

测试结果 Test Result (Unit: mg/kg)

样品编号 Sample No.	EDXRF		PHTH 筛分结果 ^②	化学测试 Chemical Testing			单项判定 Item Conclusion
	测试项目 Test Item	结果 ^① Results ^①	PHTH Screening Results ^②	测试项目 Test Item	结果 ^③ Result ^③	限量 Limit	
G4442187D3-40	Pb	BL	\	Pb	\	1000	PASS
	Cd	BL	\	Cd	\	100	PASS
	Hg	BL	\	Hg	\	1000	PASS
	Cr	BL	\	Cr ⁶⁺	\	1000	PASS
	Br	BL	\	PBBs	\	1000	PASS
				PBDEs	\	1000	PASS
	DEHP	\	BL	DEHP	\	1000	PASS
	DBP	\	BL	DBP	\	1000	PASS
	BBP	\	BL	BBP	\	1000	PASS
DIBP	\	BL	DIBP	\	1000	PASS	



Hotline 400-819-5688

www.ponytest.com

PONY-BGLS186-03C-003-2021A

谱尼测试集团深圳有限公司

公司地址: 深圳市宝安区福海街道桥头社区永和路鑫豪盛工业园 1 栋、2 栋 3 层

检测地址: 深圳市宝安区福海街道桥头社区永和路鑫豪盛工业园 1 栋、2 栋 3 层

电话: 0755-26050909

传真: 0755-26068336



测试报告(Test Report) 报告编号(NO.): MRCKXA8G4442187D3 签发日期(Issued Date): 2023-10-12 Page 18 of 23

备注 Remark:

- (1) (a)结果显示的是总 Br 含量,而限用物质是 PBBs/PBDEs;结果显示的是总 Cr 含量,而限用物质是 Cr⁶⁺.
It is the result on total Br while test item on restricted substances is PBBs/PBDEs.It is the result on total Cr while test item on restricted substances is Cr⁶⁺.
- (b)EDXRF 所得的测试结果只作初步筛选,如果 XRF 结果超出 IEC 62321-3-1:2013 所规定的警戒范围,我们建议客户用更精确的化学测试方法测试样品。(单位 mg/kg)
Results are obtained by EDXRF for primary screening,and further chemical testing, if the concentration exceeds the below warning value according to IEC 62321-3-1:2013 (unit:mg/kg)

元素 Element	聚合物 Polymer	金属 Metal	复合材料 Composite Materials
Cd	$BL \leq (70-3\sigma) < X < (130+3\sigma) \leq OL$	$BL \leq (70-3\sigma) < X < (130+3\sigma) \leq OL$	$LOD < X < (150+3\sigma) \leq OL$
Pb	$BL \leq (700-3\sigma) < X < (1300+3\sigma) \leq OL$	$BL \leq (700-3\sigma) < X < (1300+3\sigma) \leq OL$	$BL \leq (500-3\sigma) < X < (1500+3\sigma) \leq OL$
Hg	$BL \leq (700-3\sigma) < X < (1300+3\sigma) \leq OL$	$BL \leq (700-3\sigma) < X < (1300+3\sigma) \leq OL$	$BL \leq (500-3\sigma) < X < (1500+3\sigma) \leq OL$
Br	$BL \leq (300-3\sigma) < X$	—	$BL \leq (250-3\sigma) < X$
Cr	$BL \leq (700-3\sigma) < X$	$BL \leq (700-3\sigma) < X$	$BL \leq (500-3\sigma) < X$

- (c) BL=低于限度, OL=超出限度, IN=不确定, LOD=测试极限值, X=需要做进一步测试的范围
BL=Below Limit, OL=Over Limit, IN=Inconclusive, LOD=Limit of Detection, X=The range of needing to the further testing
- (d) 对于复合材料, XRF 筛选测试 RoHS 元素所得数据可能与样品中实际含量不同。
The XRF screening test for RoHS elements-The reading may be different to the actual content in the sample be of non-uniformity composition

- (2) PHTH 筛选结果只作初步筛选,如果测试结果超出 IEC 62321-3-3:2021 所规定的警戒范围,我们建议客户用更精确的化学测试方法测试样品。(单位 mg/kg)
PHTH screening results are only preliminary screening,and further chemical testing, if the concentration exceeds the below warning value according to IEC 62321-3-3:2021 (unit:mg/kg)

化合物 Compound	聚合物 Polymer
DEHP	$BL \leq 600 < X$
DBP	$BL \leq 600 < X$
BBP	$BL \leq 600 < X$
DIBP	$BL \leq 600 < X$

- (3) (a) mg/kg=ppm=0.0001%, N.D.=未检出(低于方法检出限), \=未测试, —=无要求。
mg/kg=ppm=0.0001%, N.D.= not detected(<MDL), \= not conducted, —= not available.
- (b)化学测试单位和方法测试极限值
Unit and Method Detection Limit (MDL) in wet chemical test

测试项目 Test Items	Pb	Cd
单位 Units	mg/kg	mg/kg
方法极限值 MDL	1	1

任何一种 PBBs (多溴联苯) 和 PBDEs (多溴二苯醚) 化合物的方法测试极限值是 5 mg/kg; 聚合物和复合材料样品中 Cr⁶⁺ 的方法测试极限值是 8 mg/kg.

The MDL for single compound of PBBs & PBDEs is 5 mg/kg and MDL of Cr⁶⁺ for polymer & composite sample is 8 mg/kg.

由于未获知样品的存储条件和生产日期,样品的六价铬测试结果仅能代表测试时样品含六价铬的状态。

Storage conditions and production date of the tested sample are unavailable and thus results of Cr^{VI} represent status of the sample at the time of testing.

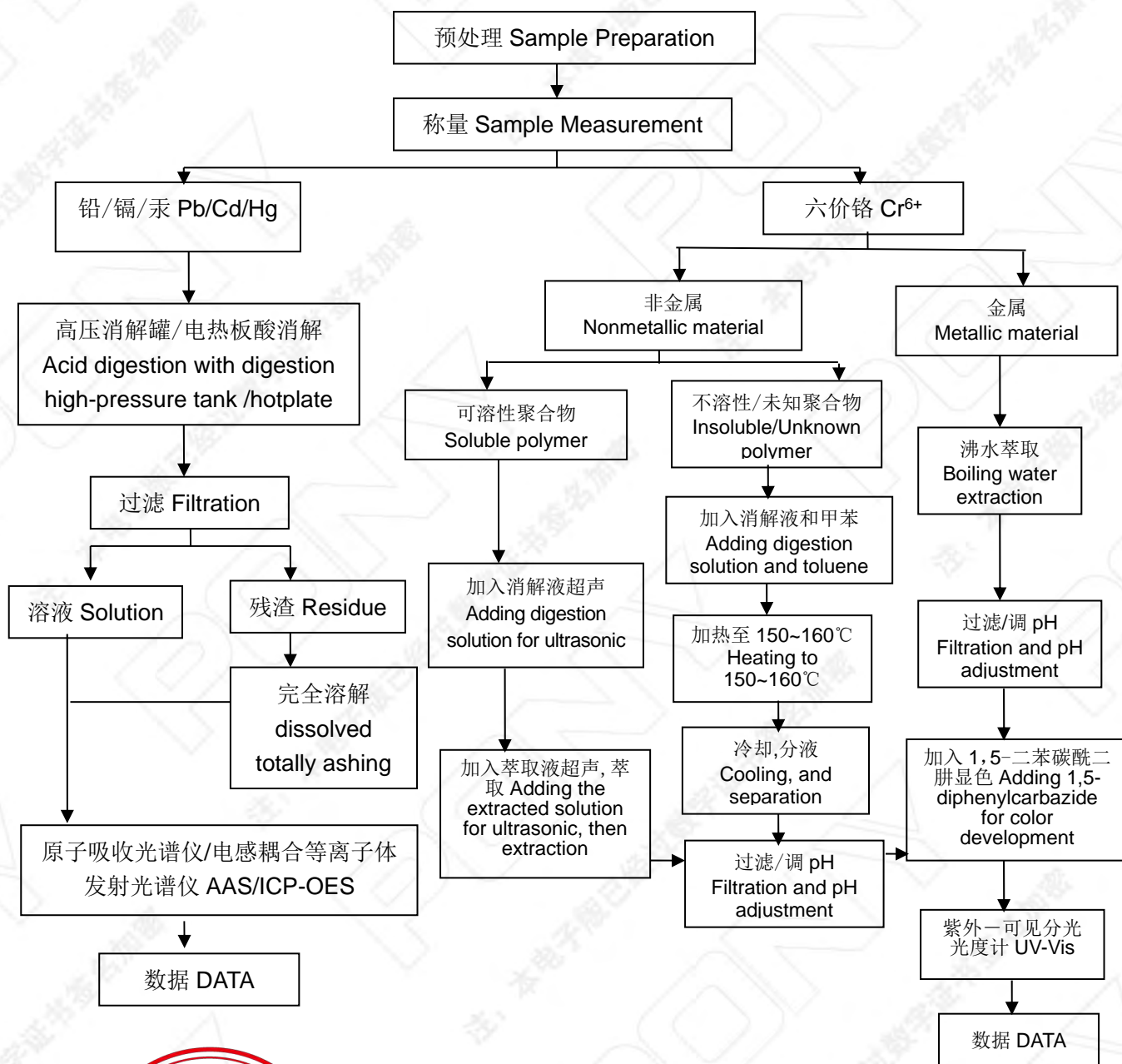
- (4) *根据欧盟 RoHS 指令豁免条款第 6(c)项条款内容,铜合金中的铅含量不大于 4wt%。
*According with the exemption list of EU RoHS Directive articles 6(c), Copper alloy containing no more than 4 % lead by Weight.
- #根据欧盟RoHS指令豁免条款7(a),高熔融温度型焊料中的铅(例如: 铅基合金中铅含量≥85%)是豁免的。
#According with the exemption list of EU RoHS Directive articles 7(a), Lead in high melting temperature type solders (i.e. lead-based alloys containing 85 % by weight or more lead) is exempted.





测试流程图 Measurement Flow-chart

测试人员Tested by: 熊程红 审核人Checked by: 彭平平 实验室负责人Person in charge of the lab by: 毛祖青
样品按照下述流程被完全消解 (六价铬除外)。
These Samples Were Dissolved Totally By Pre-conditioning Method According To Below Flow Chart. (Cr⁶⁺ Test Method Excluded)

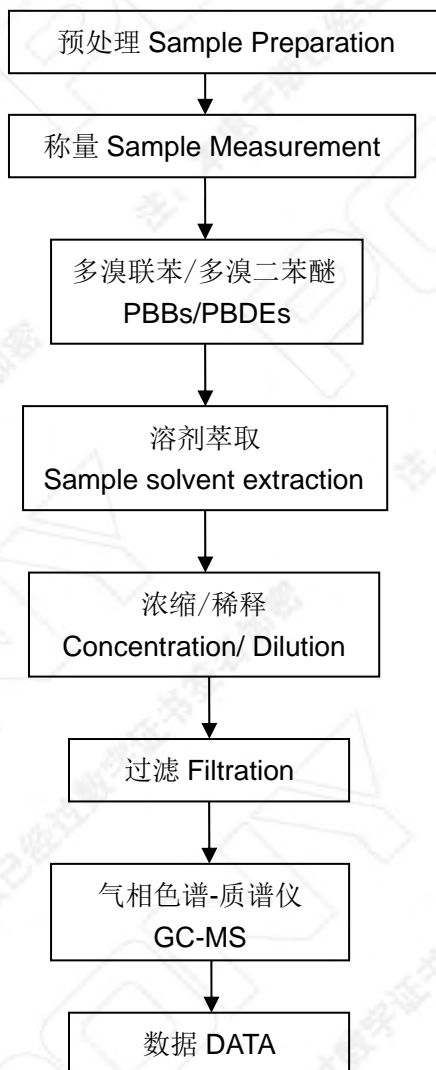




测试报告(Test Report) 报告编号(NO.): MRCKXA8G4442187D3 签发日期(Issued Date): 2023-10-12 Page 20 of 23

测试流程图 Measurement Flow-chart

测试人员Tested By: 江月娇 审核人Checked by: 彭平平 实验室负责人Person in charge of the lab by: 毛祖青





测试报告(Test Report) 报告编号(NO.): MRCKXA8G4442187D3 签发日期(Issued Date): 2023-10-12 Page 21 of 23

样品编号和照片 Sample No. & Photo: G4442187D3 成品图 Finished Photo



零部件图 Part Photo

G4442187D3-1



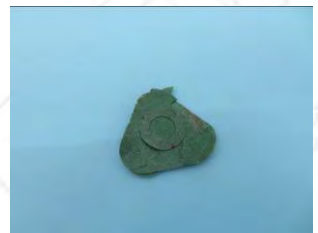
G4442187D3-2



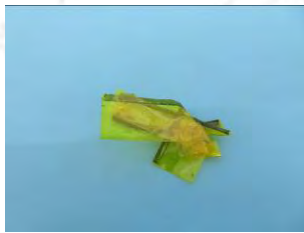
G4442187D3-3



G4442187D3-4



G4442187D3-5



G4442187D3-6



G4442187D3-7



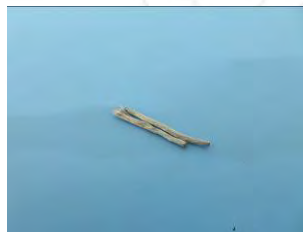
G4442187D3-8



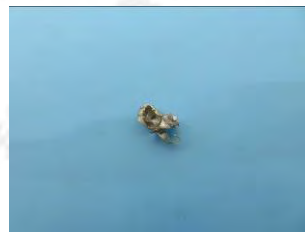
G4442187D3-9



G4442187D3-10



G4442187D3-11



G4442187D3-12



仅对报告照片中的样品负责

Pony authenticate the photo on original report only





测试报告(Test Report) 报告编号(NO.): MRCKXA8G4442187D3 签发日期(Issued Date): 2023-10-12 Page 22 of 23

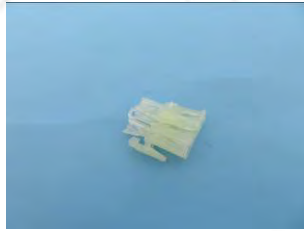
样品编号和照片 Sample No. & Photo:

零部件图 Part Photo

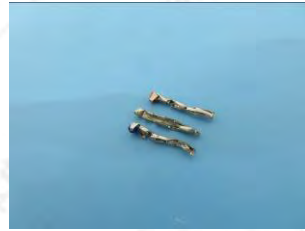
G4442187D3-13



G4442187D3-14



G4442187D3-15



G4442187D3-16



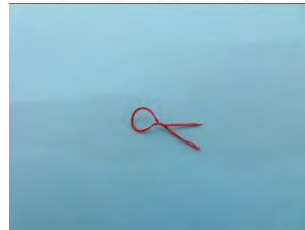
G4442187D3-17



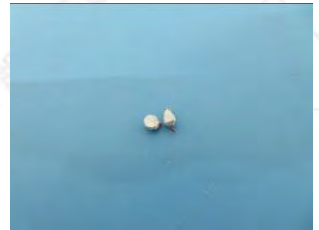
G4442187D3-18



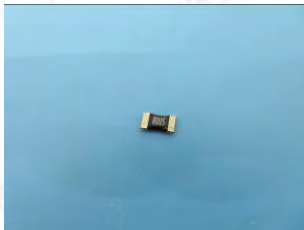
G4442187D3-19



G4442187D3-20



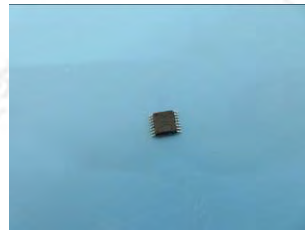
G4442187D3-21



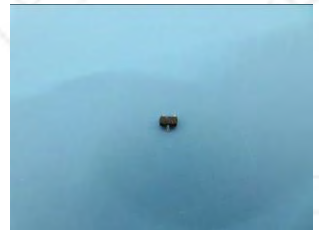
G4442187D3-22



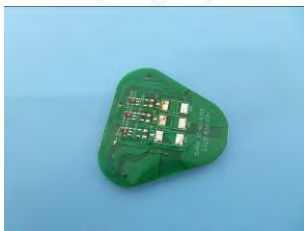
G4442187D3-23



G4442187D3-24



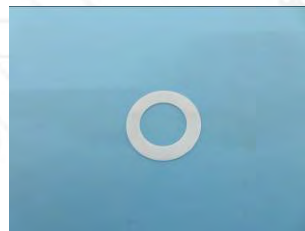
G4442187D3-25



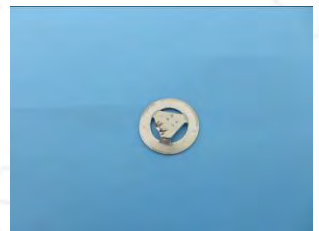
G4442187D3-26



G4442187D3-27



G4442187D3-28



仅对报告照片中的样品负责

Pony authenticate the photo on original report only





测试报告(Test Report) 报告编号(NO.): MRCKXA8G4442187D3 签发日期(Issued Date): 2023-10-12 Page 23 of 23

样品编号和照片 Sample No. & Photo:

零部件图 Part Photo

G4442187D3-29



G4442187D3-30



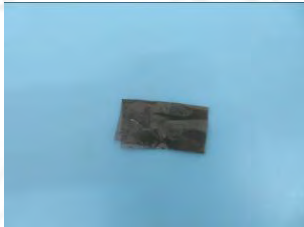
G4442187D3-31



G4442187D3-32



G4442187D3-33



G4442187D3-34



G4442187D3-35



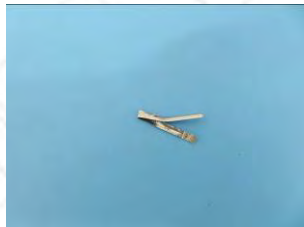
G4442187D3-36



G4442187D3-37



G4442187D3-38



G4442187D3-39



G4442187D3-40



仅对报告照片中的样品负责
Pony authenticate the photo on original report only
报告结束 End of Report

